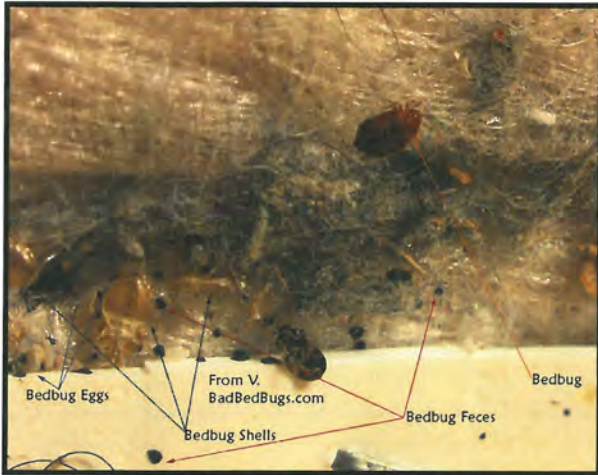




FM 4890-ES INFESTICIDE

SPECIALTIES FOR MAINTENANCE AND SANITATION SINCE 1947



BED BUGS & DUST MITES



LICE



FLEAS & TICKS

ELIMINATION OF INFESTATION

Broad Spectrum - Kills lice, bed bugs, fleas, ticks and dust mites.

Non-Staining - Will not stain water-safe fabrics. Always test in an inconspicuous area first.

Versatile - May be used in all non-food areas of any type of facility on bedding, garments, furniture and other inanimate objects.

Residual - Up to two week residual action on wood, ceramic surfaces and carpet.

User Friendly - Non-irritating to humans and animals. No overpowering insecticide odor.

Effective - Synergistic action insures fast, total kill.

NOT FOR USE ON HUMANS OR ANIMALS.

RECOMMENDED FOR: HOTELS, APARTMENTS, NURSING HOMES, SCHOOLS, KENNELS, HOSPITALS, WAREHOUSES, RESTAURANTS, MASS TRANSIT, SHELTERS, DORMITORIES, SCHOOL BUSES, CORRECTIONAL FACILITIES, CHILD CARE FACILITIES, FURNITURE RENTAL COMPANIES

16 doz. or 8 doz. or 4 doz. or NET Wt. 9.5 oz.
4/48 cases 2/48 cases 1/48 case (Can Size 16oz.)

EPA Reg. No. 1021-1767-1203
EPA Est. 11623-GA-1

Rev. 01-24-11

Toll Free: 800-238-5150
Local: 901-363-4340
Fax: 901-375-3600

Delta Foremost Chemical Corp.
3915 AIR PARK ST. • P.O. BOX 30310 • MEMPHIS, TN 38130-0310

Visit our Web Site at:
www.deltaforemost.com



TECHNICAL DATA

FOREMOST 4890-ES INFESTICIDE (Aerosol)

Rev. 01-24-11

DESCRIPTION: An effective, ready-to-use, multi-purpose insecticide aerosol. Kills on contact lice, bed bugs, nymphs, dust mites, fleas and ticks.

APPLICATION: Recommended for hotels, apartments, nursing homes, schools, kennels, hospitals, warehouses, restaurants, mass transit, shelters, dormitories, school buses, correctional facilities, child care facilities and furniture rental companies.

DIRECTIONS: It is a violation of federal law to use this product in a manner inconsistent with its labeling. This product is not for use on humans or animals. If lice infestation should occur on humans, use a product labeled for use on humans. Shake well before each use. Remove protective cap. Aim spray opening away from person. Push button to spray. Vacate room after treatment and ventilate before reoccupying. Do not allow children or pets to contact treated areas until surfaces are dry.

TO KILL LICE: Spray in an inconspicuous area to test for possible staining or discoloration. Inspect again after drying, and then proceed to spray entire area to be treated. Hold container upright with nozzle away from you. Depress valve and spray from a distance of 8 to 10 inches. Spray each square foot for 5 seconds or until damp. Spray only those garments, parts of bedding, including mattresses and furniture, that cannot be either laundered or dry-cleaned. Allow sprayed articles to dry thoroughly before use.

TO KILL TICKS and FLEAS: Spray around beds, furniture and pet's habitat. Spray pet sleeping quarters, bedding, floor and floor covering where pets are kept. Repeat as necessary. Use only a recommended pet spray on pets.

TO KILL DUST MITES: First thoroughly vacuum entire room concentrating on areas where mites congregate, such as mattresses, box springs, headboards, walls, floors, carpeting and baseboards. Then spray surfaces until damp. On mattresses allow spray to dry thoroughly before replacing bedding.

TO KILL BEDBUGS: Apply as a spot treatment to cracks and crevices, around baseboards, floorboard, headboards and walls. First thoroughly clean and air out mattresses and springs. Then spot treat only areas that may harbor pests. On mattresses, concentrate on tufts, folds, and seams. Repeat as necessary.

PRECAUTIONS: **HAZARDS TO HUMANS AND DOMESTIC ANIMALS. CAUTION:** Harmful if absorbed through skin. Avoid contact with eyes, skin or clothing. Wash hands before eating, drinking, chewing gum, using tobacco or using the toilet. Do not use in commercial food/feed processing, preparation, and food/feed storage or serving areas. In the home, all food/feed processing surfaces and utensils should be covered during treatment, or thoroughly washed before use. Exposed food/feed should be covered or removed. Remove pets, birds and cover fish aquariums before spraying. **ENVIRONMENTAL HAZARDS:** This product is toxic to fish and other aquatic invertebrates. Do not apply directly to water. Do not contaminate water by cleaning of equipment or disposal of wastes. **PHYSICAL OR CHEMICAL HAZARDS:** Flammable. Contents under pressure. Keep away from heat, sparks, or open flames. Do not puncture or incinerate container. Exposure to temperatures above 130°F may cause bursting.

FIRST AID: **If in eyes:** Hold eye open and rinse slowly and gently with water for 15-20 minutes. Remove contact lenses, if present, after the first 5 minutes, then continue rinsing eye. Call a poison control center or doctor for treatment advice. **If on clothing:** Take off contaminated clothing. **If on skin:** Rinse skin immediately with plenty of water for 15-20 minutes. Call a poison control center or doctor for treatment advice. **If swallowed:** Call a poison control center or doctor immediately for treatment advice. Have person sip a glass of water if able to swallow. Do not induce vomiting unless told to do so by the poison control center or doctor. Do not give anything by mouth to an unconscious person. Have the product container or label with you when calling a poison control center or doctor, or going for treatment.