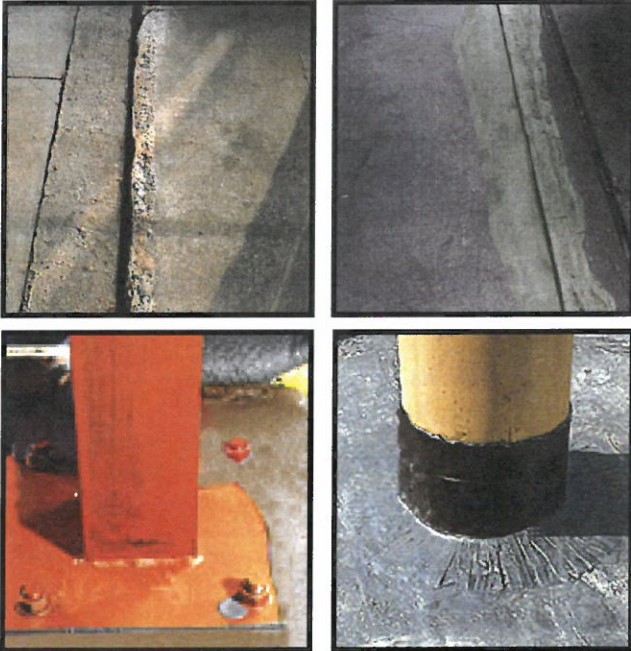




3347-ES HI STRENGTH CONCRETE PATCH AND ANCHORING CEMENT

SPECIALTIES FOR MAINTENANCE AND SANITATION SINCE 1947



- Repairs and Resurfaces Spalled, Eroded Concrete Floors
- Anchors Bolts, Beams and Machinery
- Justifies Slabs and Repairs Joints
- Fills Cracks
- Resists Steel Wheel Traffic and Impact From Falling Equipment or Merchandise

Authorized by USDA for use in
federally inspected meat and poultry plants.

CONCRETE PATCH FOR SURFACE MAINTENANCE PROBLEMS

OVERCOMES shortcomings of mortar and cement for repairing, resurfacing and renovating existing construction.

HARDENS to a granite-like surface with high compression strength, impact resistance, shock resistance and vibration absorbency.

IMPROVES sanitation with an impervious surface that cannot be penetrated or embedded with dirt and bacteria.

WITHSTANDS foot traffic in 4 hours, heavy wheel traffic in 16 hours.

EXCELLENT for filling cracks ($\frac{1}{4}$ " or larger), holes, and spalled or eroded concrete surfaces.

MIXING is not critical. The two components may be mixed and applied by casual labor.

COMPRESSIVE STRENGTH of Foremost 3347-ES is 5 times greater (exceeds 10,000 psi) than ordinary concrete and is more resistant to oils, chemicals and moisture. It has the tensile strength and adhesion to resist freeze-thaw lifting and durability to withstand weathering. Indoors or out, FM 3347-ES won't loosen, crack, or shrink under stress.

Packaged in Kits of 3—12/1 gallons Foremost Aggregate
3—12/11 oz. cans Foremost Liquid Hardener
6—2038 TFE-Lube Aerosol

Rev. 8-20-15

Toll Free: 800-238-5150
Local: 901-363-4340
Fax: 901-375-3600

Delta Foremost Chemical Corp.
3915 AIR PARK ST. • P.O. BOX 30310 • MEMPHIS, TENNESSEE 38130-310

Visit our Web Site at:
www.deltaforemost.com





TECHNICAL DATA

FOREMOST 3347-ES HI STRENGTH CONCRETE PATCH AND ANCHORING CEMENT

Rev. 08-20-15

DESCRIPTION: Foremost 3347-ES Hi Strength Concrete Patch And Anchoring Cement is a two component product. Foremost 3347-A-ES is the dry component and Foremost 3347-B-ES is the liquid mix. This is a specially formulated aggregate modified with epoxy resins, curing agents and resinous modifiers designed to combat the shortcomings of mortar and concrete.

It is self-bonding and adheres tenaciously to concrete, brick, wood, metal, plastic and other substrates. The excellent adhesion, chemical resistance, strength and low shrinkage provide an excellent and needed combination of properties.

The compressive strength of Foremost 3347-ES Hi Strength Concrete Patch and Anchoring Cement is five times greater (compressive strength exceeds 10,000 psi) than ordinary concrete and is more resistant to oils, chemicals and moisture. It has the tensile strength and adhesion to resist freeze-thaw lifting; durability to withstand weather and ultraviolet degradation.

APPLICATION: Foremost 3347-ES Hi Strength Concrete Patch And Anchoring Cement is recommended for fast and economical repairs and is easy to use on pitted sidewalks, driveways, ruts, holes, spalled floors, roofs, broken curbs, steps and ledges. Used in industrial plants, food and service industries, industrial ramps and docks, churches and any other place concrete needs repairing. It is used for anchoring heavy machinery, equipment, tables, chains, pipes, etc., to concrete surfaces.

Standard Kit covers 400 square feet at 1/8" thickness.

DIRECTIONS: **NOTE:** Do not contaminate the material with water before applying and do not apply outdoors if rain is likely or if temperature is below 40°F.

1. Surface to be coated should be clean and free from oil and grease. Sweep thoroughly to remove dirt and loose debris.
2. Mix thoroughly by adding 14.3#(1 gallon) of Foremost 3347-A-ES to 11 ounces of Foremost 3347-B-ES or 20.8 ounces of Foremost 3347-A-ES to 1 ounce of Foremost 3347-B-ES. Continue mixing until you have a uniform, thin, workable mixture.
3. Spray trowel and other working tools with Foremost 2038 TFE-Lube (supplied) to prevent Foremost 3347-ES from sticking.
4. Trowel mixture into cracks, potholes, eroded areas and smooth to desired surface texture using regular cement working tools, brush or broom.
5. Allow the areas to dry 4 hours before using for foot traffic and 24 hours for heavy traffic.
6. Do not mix more material than can be applied within 45 minutes.

PRECAUTIONS: **KEEP OUT OF REACH OF CHILDREN.** Avoid contact with face, skin, or eyes. May cause eye and skin irritation. Avoid contact with eyes and skin. Do not take internally.

FIRST AID: EYES: Flush eyes with plenty of water for at least 15 minutes. Get medical attention.

SKIN: Wash with soap and water. Get medical attention if irritation occurs. Remove and wash contaminated clothes.

Before using this product, read the Safety Data Sheet (SDS) for more detailed information regarding safe handling.