



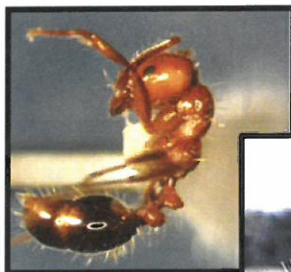
4844-ES FIRE ANT KILLER FOAM

SPECIALTIES FOR MAINTENANCE AND SANITATION SINCE 1947



INSTANT KILL — Residual Protection

EPA REGISTERED



Typical Fire Ant Mound

GREAT VERSATILITY— This high performance formula provides:

Instant kill & residual killing activity.
Kills adults, larvae and eggs.

DUAL SYNERGISTIC ACTION— Imports deadly poison to fire ants and keeps killing after initial contact.

Residual effect lasts up to 4 weeks.

One can will treat 8-10 small mounds, 6-8 medium mounds or 4-6 large mounds.

EASY TO USE— Handy, self-contained Aerosol Dispenser for the ultimate convenience with a lethal injection methods.

HIGHLY EFFECTIVE— Fire Ant Killer Foam produces a dense, expanding, penetrating foam directly inside the mound for an immediate kill. Injector Rod is provided.

RECOMMENDED FOR:

Playgrounds	Yards	Woodlands
Golf Courses	Parks	Cemeteries



Injector Wand



Packaged:	16 Doz. or	8 Doz. or	4 Doz. or	18 ounces	NET WEIGHT
	4/48 cases	2/48 cases	1/48 case	18 oz. can	

One Wand included with each dozen

Rev. 5-8-18

Toll Free: 800-238-5150
Local: 901-363-4340
Fax: 901-375-3600

Delta Foremost Chemical Corp.
3915 AIR PARK ST. • P.O. BOX 30310 • MEMPHIS, TENNESSEE 38130-310

Visit our Web Site at:
www.deltaforemost.com





TECHNICAL DATA

FOREMOST 4844-ES FIRE ANT KILLER FOAM

Rev. 9-22-15

DESCRIPTION: An EPA registered water-based aerosol Fire Ant Killer Spray. Contains synergized Permethrin and Tetramethrin, which provide quick killing action and residual control for up to 4 weeks. When applied FM-4844-ES Fire Ant Killer Spray produces a dense expanding foam which penetrates into the mound. This dense long lasting foam increases contact time and blocks escape routes. One can treats 8 to 10 small mounds, 6 to 8 medium mounds or 4 to 6 large mounds.

APPLICATION: Recommended for playgrounds, yards, woodlands, golf courses, parks, cemeteries, etc.

DIRECTIONS: It is a violation of Federal Law to use this product in a manner inconsistent with its labeling.

Do not use in food/feed areas of food/feed handling establishments, restaurants or other areas where food/feed is commercially prepared or processed. Do not use in serving areas while food is exposed or facility is in operation. Serving areas are areas where prepared foods are served such as dining rooms but excluding areas where food may be prepared or held. In the home, cover all food processing surfaces and utensils during treatment or thoroughly wash before use. Cover or remove exposed food.

This product may be used as a crack and crevice treatment or as a spot application in non-food/feed areas. All areas which insects hide or through which insects may enter should be treated.

For use in non-food/non-feed areas such as garbage rooms, lavatories, floor drains (to sewers), offices, locker rooms, machine rooms, boiler rooms, garages, mop closets and storage (after canning or bottling).

Not for use in Federally Inspected Meat and Poultry Plants.

Do not apply this product in occupied patient rooms or in any rooms/areas while occupied by patients, the elderly or infirm. Do not apply to classrooms when in use.

Do not water the treated area to the point of run off. Do not make applications during rain.

All outdoor applications must be limited to spot or crack-and-crevice treatments only, except for the following permitted uses:

- (1) Treatment to soil or vegetation around structures;
- (2) Applications to building foundations, up to a maximum height of 3 feet.

Other than applications to building foundations, all outdoor applications to impervious surfaces such as sidewalks, driveways, patios, porches and structural surfaces (such as windows, doors, and eaves) are limited to spot and crack-and-crevice applications, only.

Application is prohibited directly into sewers or drains, or to any area like a gutter where drainage to sewers, storm drains, water bodies or aquatic habitats can occur. Do not allow product to enter any drain during or after application.

Fire Ants: To treat mounds, use soil injector. To maximize spray distribution, insert injector into the mound full length if possible. Inject the mound at 5-6 sites at a rate of 5-10 seconds spray per site. For very large mounds (over 36 inches in diameter), increase the number of injection sites. Space injection sites in a circular pattern on the mound surface with one site in the center. To quiet active ants on mound surface, sweep surface with spray from a distance of 18 inches. For best results, apply in cool weather or in early morning or late evening hours. Treat new mounds as they appear.

NOTE: Buyer assumes all responsibility for safety and use not in accordance with directions.

PRECAUTIONS: KEEP OUT OF REACH OF CHILDREN

FIRST AID: If inhaled: Move person to fresh air. If person is not breathing, call 911 or an ambulance, then give artificial respiration, preferably by mouth to mouth, if possible. Call a poison control center or doctor for further treatment advice. If on skin or clothing: Take off contaminated clothing. Rinse skin immediately with plenty of water for 15-20 minutes. Call a poison control center or doctor for treatment advice. If in eyes: Hold eye open and rinse slowly and gently with water for 15-20 minutes. Remove contact lenses if present, after the first 5 minutes, then continue rinsing eye. Call a poison control center or doctor for treatment advice. If swallowed: Call poison control or doctor immediately for treatment advice. Have person sip a glass of water if able to swallow. Do not induce vomiting unless told to do so by the poison control center or doctor. Do not give anything by mouth to an unconscious person.

Before using this product read the Safety Data Sheet (SDS) for more detailed information regarding safe handling.